

# **BigDesk V2.30**

Virtual Desktop for Microsoft Windows

## **What On Earth Is BIGDESK?**

One of the best things about Windows is that you can run several programs at once. The only real problem with this (apart, perhaps, from excruciating slowness when there are 30 or so copies of some game running at the same time) is that the screen gets awfully cluttered. BigDesk is the answer to this problem, and we think you're going to like it once you get the idea.

Imagine that you had nine monitors attached to your computer, all hidden behind a wall. Imagine a one-screen-sized hole in the wall. Now imagine that you can move the hole to look at any of the screens or even at parts of several of them. That's the thing BigDesk is going to give you. In order to use Bigdesk to the full you will probably also need a copy of BackMenu, to provide you with a pop-up program menu on each of these 'virtual' screens.

BigDesk is shareware. That means you are welcome to use it as much as you like to evaluate it, but as soon as you like it & decide to make it part of the way you work, you must pay for it! Please see the accompanying Write file, ORDERNOW.WRI, for more details. BigDesk is a part of the BackDesk package, but does not depend on other parts of the package.

Existing users will find a "what's new" list at the end of this document.

## **Installation**

To install Bigdesk, extract the files **BIGDESK.EXE**, and **BIGDLIB.DLL** into any directory named in your DOS path. We use C:\WINDOWS, but you may want to do something else.

Now from the Run... dialog of Program or File Manager, type BIGDESK. An icon will appear with a grid showing on it. Double click on the icon, and a window with a grid on it will appear.

That's all you need to know, but we'll go on to explain some of the gadgets you can use within Bigdesk if you wish.

## **Mouse Operations**

There are several different operations which can be performed with the mouse.

### *Choosing a new virtual screen*

These operations work on both the map and the icon.

To move to a new grid cell

click in the cell with the right button

To move anywhere on the Bigdesk desktop

drag the mouse pointer with the right button. If Snap Desktop To Grid option is enabled, the desktop can only be moved in units of the grid size.

If you want to place the desktop anywhere, use Shift+Right click, then drag.

You need to turn on the 'Snap Desktop to Grid?' option for the first operation to work; otherwise, the virtual screen selected will be centred on the point on the map where you click.

### Choosing an application window

These operations only work on the map

To activate a particular application window  
double click the left mouse button on the box representing the window

To activate an application which is iconised  
double click the left mouse button on the box representing the icon

### Moving an window around the Bigdesk desktop

This is only possible on the map, not on the icon.

To move an application window or icon to another place on the Big desktop  
drag the box representing the window using the left mouse button.

## **Keyboard Operation**

When BigDesk has the focus (i.e. is the window which is receiving all your attention at the moment & has the 'active' colour to its title bar), you can use the cursor keys (arrows, home, end, page up, page down) to navigate around the desktop. The grid cell selector will move in the direction of the arrow pressed, , with the other keys allowing diagonal movement.

## **Menu Operations and Options**

The menu operations are all to be found on the System menu. To access this, click once on the icon or, with the map window open, click on the bar in the top left corner or press Alt+Spacebar.

First, there are the menu options which appear on most system menus; we'll assume you can handle those.

The Bigdesk options follow these; they are:

### Set Options...

Allows you to tweak the various options in BigDesk. For more details see the section below.

### Save BigDesk Position

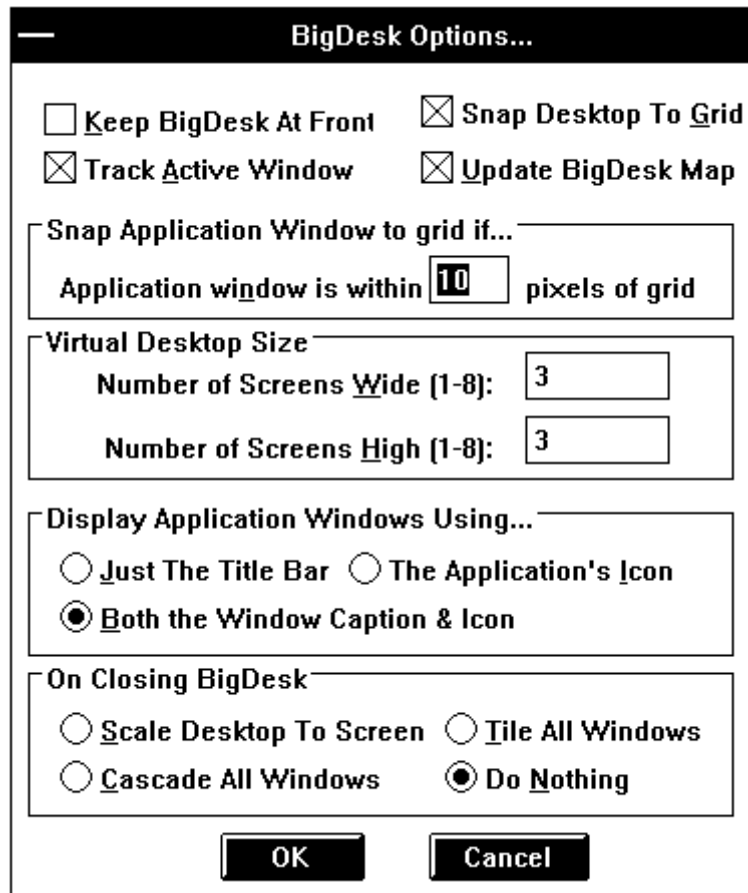
Save the current size, position and state of the map. Note that the identity, state and position of the applications which are executing *are not* saved (watch this space...).

### About...

We'll leave you to explore this on your own.

## **BigDesk Options**

Selecting the Set Options... menu option from the system menu will produce the following dialog box:-



Keep Bigdesk At Front

This option is either on (default) or off. To swap between on and off, select the menu item. When this option is On, Bigdesk will keep its icon or map display on top of any window you may open. It may get in the way of something like word-processing, but is a very useful option if you are switching between virtual screens often.

Snap Desktop To Grid

This option is either on (default) or off and works as above. When this option is on, clicking the right mouse button in a cell on the map or icon will move the 'hole in the wall' to line up with the dotted lines, thus providing a repeatable view of a group of windows.

Track Active Window

This option is either on (the default) or off and works as before. When this option is on, changing the window focus with Alt+Esc and Alt+Tab results in the newly selected window being moved to give the best view (all on screen if grid snap is off, in the cell with the largest proportion of the window if grid snap is on).

Update Desktop Map

BigDesk will update its map of the desktop every second. Normally this is fine as you can see windows appearing as they are created. On some slower systems this may cause delays or slow response, so you can turn this feature off. If you do the map display will only update when you click

on BigDesk.

#### Snap Application Window to grid if...

When moving application windows around on the BigDesk map, you may want them to be aligned on the grid (if you have it enabled). The value here defines how close (in pixels on the map display) the top left hand corner of the application window has to be to a grid point for the window to be snapped to that grid point. This option only works if you have *Snap Desktop to Grid* enabled. To turn off this feature, give a distance value of 0.

#### Virtual desktop size...

From here, you can decide how big to make your array of available virtual screens. Don't forget they all have to show on the icon!

#### Display Application Windows Using...

Here you can decide how BigDesk'll display windows on it's map. There are three choices:-

**Just the Title Bar** - displays the window's title along the top of the rectangle.

**The Application's Icon** - Displays the icon in the centre of the rectangle.

**Both the Title Bar and the Icon** - Does what it says!

#### On Closing BigDesk...

Here you can decide what BigDesk is to do with all the windows spread over the virtual desktop when you close it. There are 4 options:-

**Scale Desktop To Screen** - moves all windows onto the screen, giving them a position which roughly denotes where they were on the virtual desktop.

**Cascade All Windows** - Move all windows onto the screen offsetting each a little to the right and down from the previous.

**Tile All Windows** - Move all windows onto screen and arrange them so they cover the screen.

**Do Nothing** - Leave all windows in their current positions.

All of the option settings are saved in WIN.INI in the [Big Desk] section along with the window position and whether Bigdesk was iconised or not. The items are saved every time you click the OK button.

It's safe to add Bigdesk to your Backmenu, as subsequent invocations just activate the existing Bigdesk display.

#### **What's New? What Was New?**

- \* **V2.30** is BackMenu aware. With older versions of BackMenu and BigDesk, the menu would be obscured if BigDesk's keep-to-front option is enabled. With this version, BackMenu can stop BigDesk coming to the front if its menu is being displayed . Requires BackMenu V2.21 or greater.
- \* **V2.30** can display your application windows a number of ways. There is now a choice of displaying the window caption, the application's icon or both on the BigDesk map.

- \* **V2.22** has snap to grid for applications. If you move an application window around with BigDesk and it's top left corner is within a certain number of pixels (as displayed on the map) of a grid point, the window is snapped to that grid point. This distance is user configurable.
- \* **V2.21** has desktop dragging on the icon working again ( a bug fix).
- \* The user interface has been changed. If you are using grid snap, then right clicking and/or dragging will move you in whole screen sized units. If you want to move the desktop in smaller units, shift+right click will do this.
- \* You can now decide what BigDesk is to do with the desktop when you close it down. There are four options:-
  - Scale desktop onto screen
  - Cascade all windows
  - Tile all windows
  - Do nothing
- \* Bigdesk is now Shareware. We don't like to be bugged for money by the programs we use, so we won't bug you for money in our stuff, but registering will make Ian very happy. Go on, open ORDERNOW.WRI and do it!

Hope you like Bigdesk. It's become indispensable for us. We welcome suggestions and comments by electronic mail to **ih@ecs.soton.ac.uk** or to **sphipps@cix.compulink.co.uk**; as ever, these addresses will need reversing, munging and otherwise manipulating to make them work on the network. We will always send a reply to your note; if you don't get one, send it again trying an alternative (reverse the bit after the @; drop the cix bit; add a gateway name to the end; ask your local mail guru; etc). No promises of support or implementation but we're all fairly nice people (or so our mothers say).

Postal contact should be to:

SP Services  
 PO Box 456  
 Southampton  
 United Kingdom  
 SO9 7XG

Sorry, we don't take phone calls (apart from registrations on +44 703 550037!)

All trademarks acknowledged.  
 Documentation © 1991 SP Services  
 Software © 1991 Ian Heath